

Getting Ready to Race with Cub Pack 1031

Cub Pack 1031 scouts have been getting their pinewood derby cars ready to race at the end of January at our pack pinewood derby race.

It has been a longer break than usual for the pack because of the holidays falling on Mondays this year and school closings, but we have had car-cutting days at the firehouse for the boys and their family members. Many thanks to Wolf Leader John Foley and Asst. Cubmaster Eric Saathoff for their expertise and assistance. Moreover, thanks to Al Schwartz, a pack dad and chief's aide with BVFD, for opening the building for our use.

Cold weather postponed our Martin Luther King Day of Service, but we moved it to the next weekend, which promises to be in



Scouts and parents working on their pinewood derby cars

the 40s. Last year, Cub Pack 1031 did 268 hours of service for the community! Great job, scouts!

Each year, the pack has activities including camping, hiking, our annual pinewood derby and campfires all year long. We also do participatory citizenship along Little Paint Branch Trail, our toy drive, and Scouting for Food. Along the way, we learn responsibility, play games, and have tons of fun.

Later this year, the pack will be opening our unit to families with girls who are interested in participating in Cub Scouts. If you are interested in discovering the fun of Cub Scouts with your child, please contact Regina Halper at Pack1031CubScouting@gmail.com for more information.

NEXT ISSUE:

Submissions Due

No Later

Than:

February 21

Paper Out:

March 2

On the Agenda

By President Karen M. Coakley

The Citizen's Association will not meet in February. The year 2018 arrived with frigid, bone-chilling temperatures.



Karen Coakley

Unfortunately, we lost a longtime Beltsville resident to the cold. Danny DeHaven, who suffered from dementia, went missing on January 2. When word went out, Beltsville residents of all ages participated in the search along with volunteers from other communities and our first responders. Thank you for the care and compassion you have shown the DeHaven family.

Beltsville is still experiencing home break-ins and thefts from cars. The police will provide a free home safety check if you contact the COPS Unit at 301.937.0910. Here are some winter car safety tips:

Do not leave your car warming up unattended. Car thieves are watching neighborhoods.

Remove all the snow from your car before driving. The snow on your vehicle creates a driving hazard when chunks blow off.

Have you signed up for www.nextdoor.com yet? The police are posting safety tips and crime reports on this social website.

Finally, as always, if you have a community concern, I can be reached at 301.937.3490 or karenmcoakley@msn.com.

St. Joseph's Students Focus on "Acts of Kindness"

Acts of kindness were the focus of students during January at St. Joseph's Regional Catholic School. During the month, all students enrolled in prekindergarten through eighth grade participated in daily acts of kindness towards each other, their parents, their teachers, the custodians, and themselves. The focus of kindness at the beginning of a new calendar year was to encourage students to continue to bear the fruit of the Spirit as one way of exhibiting God's love for each other. Acts of kindness included praying for someone, writing thank-you notes to parents and teachers, eating lunch with someone new, showing appreciation by saying "Thank you," and forgiving someone and finding the good in them, among other actions. Consequently, St. Joseph's became a much more caring and compassionate place!

January was another month of Christian charity and service as during the first 4 months of the school year students and their families donated over \$700 to support breast cancer awareness, raised over \$843 in hurricane relief for Catholic charities; garnered a significant number of contributions of nonperishable food items for the less fortunate; collected

KINDNESS
 continues on page 2

Beltsville Church Helps Young Women in Bere, Chad

More than 100 girls in Chad, Africa, are going to be able to stay in school thanks to the efforts of members of the Beltsville Seventh-day Adventist Church.

A team from the church created Days for Girls kits. The kits provide basic supplies for girls to use during their monthly menstrual period. Without these kits, girls often drop out of school in the rural countryside around Bere in Chad. The town has no sanitary supplies for women's periods. The kits are washable so that they will



Photo by Akiiki Kiiza

The 100 Days for Girls kits fill three large suitcases. Deanie McCluan, right, and Ann Laurence spearheaded the project, which also involved dozens of Beltsville residents in creating the kits.



Photo by Akiiki Kiiza

Deanie McCluan, coordinator of the Days for Girls project at Beltsville Seventh-day Adventist Church, and Ann Laurence help Kermit Netteburg hoist one of the 40-pound suitcases containing 35 of the 100 kits that will help young African women be able to stay in school.

help the girls through years of schooling.

The Beltsville church connected with Bere Adventist Hospital because the medical directors at the hospital are the children of Kermit Netteburg, former pastor of the church. Deanie McCluan directed the project for the church, with special help from Ann Laurence; Renea Smallwood, the church secretary; and dozens of other volunteers. Some people sewed the kits; others bought brightly-colored fabric; others packed

CHAD
 continues on page 14

GO CONTRACTORS GROUP LTD



*Kitchens
Bathrooms
Basements
Decks*

*Painting
Additions
Sun Rooms
Enclosures*

*All Work Guaranteed
Licensed Bonded Insured*

We have 30 years of experience and in addition to the above, we do concrete, brick, and stone work.

No Job is too small

Maryland Home Improvement License

Website www.gocontractorsgroup.com

Nestor Gomez e-mail gocontractors@aol.com

240-274-4670 (Cell)

Share Your News!

Send your article submissions to News Director
Rick Bergmann at editorbvnews@gmail.com

Get Pain Free & Healthy

"Pulsed Electromagnetic Fields are proven to treat inflammation, acute injury & repair tissue" -NASA Study

Designed by a
Medical Doctor.
Portable device
with rechargeable
batteries and free
charger.



Located in Beltsville

30 day money back guarantee - 1 year Warranty

Tel: 301-220-0440

BioenergyDevice.org



**New
Patients
Welcome**

Beltsville Dental Care

John J. Moynihan, DDS, PA
10760 Rhode Island Ave.

301-937-4448

Visit us at beltsvilledentalcare.com



301-477-1074 | contactus@lhmiinc.org

Join Us at The City

LIGHTHOUSE MINISTRIES INTERNATIONAL

10727 Tucker St. Beltsville, MD 20705 | www.LHMIinc.org

COUPLES' DATE NIGHT

2 · 16 · 2018 @ 6PM

Family Life Enrichment Program at Lighthouse Ministries International

FREE ADMISSION - REGISTRATION RREQUIRED

Couples Paint Night Activity (\$30 per person, \$50 per couple)

To Register & For More Details Visit >>> www.LHMIinc.org/FLEM

**Join Us This Week For Worship & Fellowship
at Lighthouse Ministries International**

- Bread of Life Distribution (Pantry Program) - Wed. 6pm & Sun. 1pm
- L.I.F.E Hour (Learning Is For Everyone) - Sunday, 8:30am - 9:30am
- A Lighthouse Moment (Sunday Worship) - Sunday, 10am
- Light Through The Word (Prayer & Bible Study) - Wednesday, 7:30pm
- Little Beacons of Light (Kids Fellowship) - Friday, 7:30pm
- Shining Lights Youth Ministry (Youth Fellowship) - Friday, 7:30pm
- Virtuous Ladies of Light (Women's Fellowship) - Friday, 7:30pm
- Titus Men of Light (Men's Fellowship) - Friday, 7:30pm

My Wife and I pray that your territories will be enlarged and out of your homes and lives will shine the salvation of Jesus to others. We pronounce blessings upon your household, your business, and may everything you put your hands to be fruitful. We declare life in your marriage, your career and your mission.

Rev. Dr. Osmon F. Cameron, PhD & Lady Cora-Diana Cameron



Beltsville Library Hours

Mon. - Tues.: 1 p.m.-9 p.m.

Wed. - Fri.: 10 a.m.-6 p.m.

Saturday: 10 a.m.-5 p.m.

Sunday: Closed

Beltsville News

PUBLISHED BY THE BELTSVILLE-VANVILLE DISTRICT
CITIZENS' ASSOCIATION INC.

News: Rick Bergmann, editorbvnews@gmail.com, 11318 Big Horn Ct. Beltsville, MD 20705. Enclose self-addressed stamped envelope if photo is to be returned. Accepted material may be edited. Letters to the Editor on local topics are encouraged. Names may be withheld upon request.

Advertising:

937-6796 Ted Ladd, 11722 Emack Rd., Beltsville 20705 • tedladd02@aol.com

Subscriptions:

Send \$15.00 to Carolyn Scarcia, 11007 Emack Rd., Beltsville 20705

Distribution: 937-7765 (other) Carolyn Scarcia

Editor Emeritas: Sally Ehrle

Staff Listings

Managing Editor/News Director: Rick Bergmann
Advertising Manager: Ted Ladd Business Manager: Ted Ladd
Senior Copy Editor: Bryant Davis Circulation: Carolyn Scarcia

Supporting Staff Members: Jim Butcher, Ivy Christoffers, Karen Coakley, Bryant Davis, Rebecca Hutchings, Mariah McKenzie, Lynne Miller, Elizabeth Olson, Bill Raulin, and Nancy Thrush.

Circulation

14,000 copies published monthly; 10,000 mailed in the 20705 zip code (total saturation) and 4,000 pick up copies available at the Beltsville library, community center, selected stores, and churches.

Please join our Facebook page

(<https://www.facebook.com/groups/300944563420364/>)

and follow us at beltsville news on Instagram.

Check out our website: www.beltsvillenewstoday.com

WHO HOLDS

Who holds the earth in space,
set it to spinning?
Who placed sun near its face,
protects from singeing?
Who hung a moon close by for
monthly measures?
Who lights the darkened sky with
starry treasures?

Who moistens land through loud
storms, raining, snowing?
Whose wisdom cycles clouds
to green its growing?
Who dug deep reservoirs in seas
and oceans?
Who freshens water stores
cascading mountains?

Whose wondrous mind has made
all kinds of creatures?
Who gave each of them shape,
specific features?
Who fashioned trunks and limbs,
their strength sustaining?
Who clothes with fur and skin
that's self-maintaining?

Who hears the hungry cry,
sends satisfaction?
Who knows the reasons why
without distraction?
Whose power can confound
our understanding?
Who's sovereignly profound by
words commanding?

Whose holiness is pure His
presence awesome?
Who states none are secure
in their position?
Whose faithful Spirit seeks,
forever saying,
"It's My Beloved Son's works
I'm displaying."?

"Who humbly left His throne
becoming human?
Whose selfless love alone
redeemed My kingdom?
Who was the sacrifice,
My perfect justice?
Who cancelled sin for life?
His name is JESUS!"

Rebecca Hutchings • 11/08/2017

KINDNESS

continued from page 1

warm-weather clothing for the needy; donated bundles of pajamas, toiletries, Christmas books and DVDs, and popcorn and hot chocolate for the less fortunate; and provided lunches for the Elizabeth House each month.

St. Joseph's Regional Catholic School has determined Kelsey Afoakwa as the school representative at the Prince George's County Annual Spelling Bee competition to be held in March. The first runner-up was Rose-lyn Woods, and the second runner-up was Joseph Conaty. With 32 students participating, students spelled their way through terms such as "agog," "ricochet," and "Methuselah."

For more information, please visit www.stjosrcs.org or call 301.937.7154 or email secretary@stjosrcs.org.

Club News



The Split Second Band

Happenings at the College Park Moose Lodge

The College Park Moose Lodge has many exciting events happening in February and March! They would like to invite you to join them. All of these events are open to the public! The College Park Moose Lodge is located at 3700 Metzert Road, College Park, MD 20740. For further information, tickets, or reservations, please call 301.935.5525.

In February, there are games, music, and more. On Saturday, February 10, there will be Spring Designer Purse Bingo. The doors open at 4:30 pm, and bingo begins at 6. Tickets are only \$25 and include a spaghetti dinner. The snow date is February 17, and tickets are on sale now. On Saturday, February 24, the lodge will host a Las Vegas Night. There will be many games including the big six wheel, a cake wheel, stud poker, 60/40 game boards, blackjack, and horse racing. Buy a horse for \$10, name it, and watch the horse races on the big screen. You could be a lucky winner! The doors open at 6 pm, and post time for the horse races is 7 pm. There will also be a cash bar as well as food and refreshments available for purchase. Admission is free.

March is all about the music,

featuring many local bands. On Saturday, March 10, the Moose will hold its Splish Splash Beach Bash featuring live music by the award-winning Split Second Band. Split Second has won the Best Local Band award five years in a row. There will be a home-cooked dinner including dessert. Tickets are \$25 in advance and \$30 at the door. There will also be a silent auction, pull tabs, and a 50/50 raffle. This event is sponsored by the Women of The Moose #1262 and will benefit the Mooseheart Child City (<http://www.mooseheart.org/>). Come on out and wear your beachwear, capris, beach hats, Hawaiian shirts, sandals, sunglasses, etc. All are acceptable! Then we can dream it is summer and imagine that we can hear the waves! Dinner is from 6-7:30 pm and the music 8-11:30 pm. Let's have a big crowd to have fun and support the kids at Mooseheart!

Finally, on Saturday, March 17 The Fabulous Hubcaps will be here for St. Patrick's Day! Wear your green and be ready to dance to some good ol' rock and roll! Tickets are \$35, and food will be available to purchase. Make your reservations now!

The Beltsville Young at Heart

By Barbara Schofield

The first January meeting for Young at Heart was canceled because of the weather. Hopefully, we will have the second one this month. Our Christmas luncheon was wonderful. There were lots and lots of great food with some new things to try. It

was all delicious. We held a 50/50 raffle and other raffles as well. Prayers go out to all those with health troubles, both themselves and their family members. I will leave you with this quotation from H. Jackson Brown, Jr.: "Remember that the happiest people are not those getting more, but those giving more."

The Prince George's County Genealogical Society

The Prince George's County Genealogical Society is pleased to announce we will resume our monthly meetings on Wednesday, February 7, at the New Carrollton Municipal Center, 6016 Princess Garden Parkway, New Carrollton, MD 20784. Meetings begin at 7 pm with time to network and have genealogy questions answered. Meetings are always free and open to the public. Refreshments served.



Bonnie Bartel
301-343-8887
 Call, Text or Email me for an appointment
Bonsnobun@aol.com
Image Hair n Things
 10611 Montgomery Rd
 Beltsville, MD 20705



Pest Patrol
 Residential and Commercial Pest Control (Including Termite Services)

Cheryl Scruggs
 (301) 775-9638

Kelvin Scruggs
 (301) 775-6169



Got Bugs-Call Scruggs

**Discounts 5% : 1st Time customers, Military and Seniors*

RANGES WASHERS DRYERS OVENS

JEFF'S SERVICE

APPLIANCE INC.

SERVING BELTSVILLE
 OVER 20 YEARS

301 937 6003

REFRIGERATORS MICROWAVES

Open for breakfast daily at 8 am

tj's of Calverton
 RESTAURANT

Enjoy All American food
 Served in a relaxing Atmosphere!!

Thanks to you we are Celebrating 31 years!
ENJOY 15% SAVINGS
 VALID FOR DINING ROOM ONLY * MAX VALUE \$5.00
GOOD FOR MARCH 2018

for full menu and more info please visit us at
www.tjs of calverton.com
 11607 BELTSVILLE DRIVE *BELTSVILLE MD * 20705
301-572-7117
 Located in the Calverton Shopping Center

Share Your News!

Send your article submissions to News Director Rick Bergmann
 at editorbvnews@gmail.com

NEW YEARS SALE

January 1st thru 31st

Decorate for the New Year

20% Off
 Art, Mirrors & Furniture
 (non-sale items only)

\$5.00 Off
 regular retail price per gallon of Ben Moore Paint Regal, Natura, & Aura

20% Off
 Custom made draperies, valences and upholstery (fabric only)



Michael & Valerie wish our Friends and Customers a Healthy & Prosperous New Year!!

Will's Decorating

10508 Baltimore Avenue,
 Beltsville, MD 20705

301-937-6100



Irving "Pete" Peterson

Peterson, Irvin "Pete"

On January 7, 2018, in Beverly Hills, FL, of complications associated with Alzheimer's disease. Born and raised in California, Pete graduated from Dinuba High School in 1943 and immediately enlisted in the Navy where he was assigned to the V-12 program. He subsequently served in the World War II Pacific Theater on the *USS Gardiners Bay*, a seaplane tender, until mustered out in 1946 as a lieutenant. Pete obtained a bachelor's degree at the University of California Davis in 1951.

On graduation, he married Patricia Abbott, and they moved to a Dinuba turkey ranch, followed by stops in Visalia and Merced, having three boys along the way. Pete took his turkey ranch experience back with him to UC Davis where he obtained his DVM degree in 1963. Pete's entire career was devoted to identifying, controlling, and preventing poultry diseases. He retired from the US Department of Agriculture in Beltsville where he was the chief staff veterinarian for disease control programs of the National Poultry Improvement Plan. Pete's work in this field became the standard for poultry farms in the US, and he was dispatched to several foreign countries to advise and improve their own programs. Pete was an active member of Emmanuel United Methodist Church, Rotary International, and Toastmasters, as well as held adult leadership positions in Boy Scouts of America.

Pat and Pete moved to Beverly Hills, FL, on his "retirement," but his work continued in the community, volunteering across sev-

eral organizations there. Pete was happiest when out supporting the neighborhood, whether planting trees, picking up trash, sorting recyclables, or running errands for others less able. Pete was an exercise enthusiast and continued to work out almost daily past his 91st birthday until the scourge of Alzheimer's finally prevented him from doing so.

Pete was predeceased by his wife Patricia in 2009. He is survived by Frank (Marie) of Dravosburg, PA, Donald (Patty) of Palmyra, NY, and Alan (Robin) of Annandale, VA; grandchildren Amanda, Carly (Johnny), Dustin (Laurie), Terra, Zachary, and Abby; and great-grandsons, Declan and Finley. Pete also leaves behind his devoted companion, Carolyn, who did so much for him in his final years. A memorial service was held in the Beverly Hills Community Church on Saturday, January 20. In lieu of flowers, the family suggests contributing to the Beverly Hills Community Church or planting a tree in the community in his honor.



Daniel "Danny" DeHaven

DeHaven, Daniel Francis

Daniel Francis DeHaven, 65, passed away on January 2, 2018. The Lord called home one of His foot soldiers on that day.

Danny is survived by his wife of 35 years, Dee Dee DeHaven; and his sons: Daniel Jr., Kevin, and Mark; his parents, Harry Francis and Mary Geraldine; his siblings Toni, David, Nancy, Brian, and Greg; and a large and extended loving group of nieces, nephews,

and in-laws. Danny is preceded in death by his brother Bruce and sister Mary Katherine.

Danny was born in Gallitzin, PA, moved to Greenbelt, MD, and ultimately settled in Beltsville, MD, where he lived with his parents and siblings for a number of years. He attended the local schools and St. Joseph's church where he was an altar server and could recite the Mass in Latin.

Danny married young in life and had his first son, Daniel, Jr., in 1972. After the marriage ended, he was introduced to his current wife, Dee Dee, on a blind date, and so the love story began. It was Easter Sunday when they brought their two large families together, and they continued to celebrate Easter Sunday together for the last 35 years. Their family grew through the years where they had two more sons: Kevin and Mark. They continue to feel blessed by all the extended family members and friends through relationships cultivated.

Danny worked for the Government Printing Press as well as the Local Iron Workers (foreman) where he built bridges, Metro tunnels, and buildings around the Washington metro area. In 1986, he changed careers and entered the health insurance business working with his brother-in-law and then ultimately branched out on his own and opened his own business: Daniel DeHaven Insurance Agency.

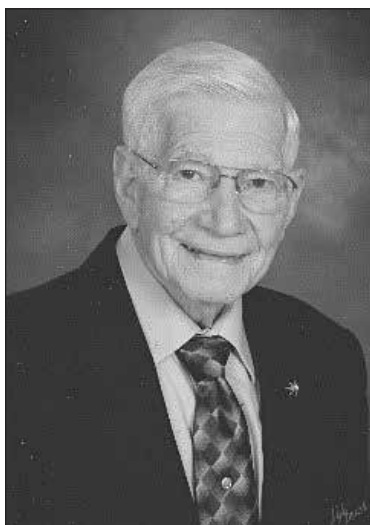
Danny was a self-taught "jack-of-all-trades," a financial advisor, Mr. Mom, and cook extraordinaire. His hobbies included motorcycles, fishing, running 3-5 miles a day, and playing poker with family and friends on Saturday evenings. His favorite music included Motown, Frankie Valli and the Four Seasons, The Beatles, Steely Dan, and Phil Collins.

Danny believed in hard work and an honest living, he would drop everything if you needed a hand, he loved capturing milestones on video, he enjoyed singing in the shower and throughout the house, he was a kindhearted soul, and he could always be counted on for a good laugh.

A Mass of Christian Burial was celebrated at St. Joseph Catholic Church, 11007 Montgomery Road, Beltsville, MD, on Monday, January 15, at 10:00 am.; interment was at George Washington Cemetery, Adelphi, MD.

Johnson, Albert James

Albert James Johnson, 94, of Westminster, MD (formerly of Beltsville, MD), passed away Thursday, December 28, 2017, at Carroll Hospital Center. He was born December 11, 1923, in Branchville, MD, and was the son of the late Albert Lee and Annie W. (Hofmann) Johnson. Twice married, he was the beloved husband of the late Beatrice L. (Golden) Johnson, who predeceased him



Albert James Johnson

on November 2, 1987, and Willa (Kensinger) Johnson, his wife of 12 years.

Nicknamed "Ginn" as a child, he was a graduate of McKinley Tech High School in Washington, DC, with the class of 1941 and was a veteran of the U.S. Army Air Forces. Ginn and Bea were the owners of "Johnson's" general store and soda fountain in College Park (Branchville), MD, from 1949 until retiring in 1975. He went on to work as a school bus driver and bus lot assistant foreman for P. G. County, retiring again in 1992. The Johnson family lived in Beltsville from 1962 to 2005. He and Willa moved to Carroll Lutheran Village in Westminster in 2005.

Surviving in addition to his wife Willa are children by his first marriage: Glenn (Gloria) Johnson of Clarksville, MD; Gail Johnson of Laurel, MD; and Keith (Mary Louise) Johnson of Jupiter, FL. Survivors also include step-children Debbie (Larry) Wall of Clarksville, MD; Cindy (Rob) Rock of Frederick, MD; and Joan Kensinger of Seattle, WA; and his brother Lawrence (Rachel) Johnson of Clinton, NC. He was predeceased by Edith (Jack) Cochran, his sister, and her husband.

He also leaves behind five grandchildren: Kevin (Maria) Johnson of Wyndmoor, PA; Bryan (Kelly) Johnson of New Market, MD; Jason (Janell) Johnson of Clarksville, MD; Kayla Johnson of Germantown, MD; and Kyle Johnson of Palm Beach Gardens, FL. Also, step-grandchildren: Evan, Drew, and Tyler Wall and Robert and Michael Rock. He was blessed to see five great-grandchildren: Evelyn, Callista, Norah, Roselyn, and Jarrett.

Services were held in Westminster on January 3, 2018, and interment with military honors was at Fort Lincoln Cemetery in Brentwood, MD, on January 4, 2018.

Whitmore, Treva Mae

Treva Mae Whitmore, 94, died on Thursday, Jan. 18 at FirstHealth Hospice House in Pinehurst, N.C. Treva grew up in Advance, Ind., where her father, Alonzo Roahrig, was a Methodist minister, and her mother, Ethel Clara Roahrig



Treva Mae Whitmore

(Brumfield), was a homemaker who consistently swept the blue ribbon category at the Indiana State Fair with her jellies and jams. Treva began playing the family piano by ear at the age of three – a passion fueled by a thriving talent that would continue throughout her life. She caught the eye of George Emmitt Whitmore, a young veterinarian, while she was tickling the ivories in a honky-tonk in Zionsville, Ind. They married in 1942 and relocated to Beltsville, Md. in 1953 when George became the Chief Veterinarian for USDA's Agricultural Research Center.

The Whitmores lived in Beltsville, Md. for 55 years, where Treva raised six children and shared her passion for music by cultivating the talent of hundreds of budding young musicians through piano lessons and accompanying choirs, instrumental and vocal soloists and musical theater orchestras. She even appeared in a musical herself once – as the Grandmother in "Pippin" where she sang "Just No Time At All" – an anthem that aptly reflected her own life philosophy with the musical phrase: "Maybe it's meant/ the hours I've spent/feeling broken and bent and unwell./But there's still no cure/so heaven-sent /as the chance to raise some hell!"

Treva and George relocated to Belle Meade in Southern Pines, N.C. in 2008, where Treva frequently played piano for community sing-a-longs. She is survived by daughters Elizabeth Whitmore of Southern Pines, N.C. and Laura Whitmore Brown of Silver Spring, Md., and sons Samuel Whitmore of Hampstead, Md. and George Arthur Whitmore of Washington, D.C., as well as eight grandchildren, three great-grandchildren, and one great-great-grandchild. She is predeceased by husband Dr. George E. Whitmore and sons John Thomas Whitmore and Robert David Whitmore.

If you wish to honor Treva, the family asks you do so by making a contribution to the Moore County Arts Council Classic Concert Series in her honor. Donations can be provided online at www.mooreart.org or by phone at 910.692.ARTS (2787).

Life with Mother's Smile

A mother's smile is tender love, is rays of morning sunshine sparkling in the dewdrops of each night. Mother had it all - dreams	and useful servitude - every so often even a try at ruling. For you will remain for ever though is her loving Smile.
--	--

Club News

College Park Unit # 217 Welcomes New Members

By Ivy Christoffers

Several new members have joined College Park Unit # 217, and others have transferred in from other units. We welcome all to join us in our service to veterans, the active military, our youth, and our community. Some of these new members to Unit #217 have already proven very helpful in planning and cooking dinners and assisting with functions at the post home. We are always on the lookout for active members because we are a very active unit committed to "honoring their service." By doing this, we fulfill the mission of The American Legion Auxiliary, the greatest women's patriotic organization on earth.

It is my sad duty to report that some of our auxiliary functions had to be canceled because of severe weather. Never having experienced such a moody winter, several days in a row that were at such low temperatures and swinging up to the 60's and then back to severe frigid numbers, I feel it is no wonder the flu epidemic is so rampant. We hope you are not suffering the ravages of the season.

The welcoming warmth of our

post home is available to everyone who cares to visit. We enjoy our Big Bingo every Tuesday and Wednesday at noon; our Monday night Shotgun Bingo, held at 7 pm, is gaining rapidly; the Blog's Park dances on two Saturdays during the month are very popular; lunches are served beginning at 11:40 am Tuesday through Friday; and you don't want to forget our Friday night dinner dances. Dinner begins at 5:30 pm, and the dances begin at 8. Moreover, you dance to lively band music with several bands alternating throughout the month. As you can see, we have a lot to offer you.

Our post manager, Gary Kingery, is available to discuss your special function that you may want to hold in our spacious hall. We also can offer you the services of an excellent chef, Chef Brian. How about it? Check us out.

We will be picking up our Americanism essays from the local elementary schools the first week of February. Our judges look forward to reading and judging these essays each year. The winning essays are then passed on for further judging on the district

level and from there to the department level. Our Beltsville students submit excellent essays, and many receive awards.

Some important dates in February to remember are Feb. 1 - National Freedom Day, Feb. 12 - Lincoln's Birthday, Feb. 11 to 17 - National Hospitalized Veterans Week, Feb. 14 - Valentine's Day (remember to do something nice for your loved one) and also Ash Wednesday, Feb. 15 - sinking of the U.S.S. Maine, Feb. 19 - Washington's birthday observed, although it is the 22nd, and Feb. 23 - flag raised on Iwo Jima. Fly your flags on the 12 and 19.

We hope this new year brings health, wealth, and peace to each of you and that our troops serving around the world are safe from harm. May God continue to hold us in the palm of His hand as we strive to do our best in difficult times.



We've Moved to..

**335 Main Street
Laurel, MD 20707**
301-937-1904 • Fax 301-937-9583
beltsville@minutemanpress.com
www.beltsville.minutemanpress.com

**Business Cards • Letterheads • Envelopes
Brochures • Color Copies • Mailing Services
Forms • Large Format Plans**

The combination of the quality that you associate with a large commercial printer and the convenience you enjoy with a quick printer.

**Hours: Monday - Friday
8:30 am - 5:30 pm**

Beltsville Garden Club Meeting: Flora and Fauna

The Beltsville Garden Club will meet on Wednesday, February 28, at 7:30 pm in the multipurpose room of the Duckworth School, 11201 Evans Trail, Beltsville, MD. Please join us as we feature an African safari slide show that showcases both flora and fauna by the Bolts, and continuing with the plant theme, Anne Hardmann will share with us a brief talk on plant identification based on her work at Brookside Gardens.

The public is welcome, and admission is free. You are encouraged to bring something to exchange: a plant, cutting, or garden tool or magazine:

bring something, take something! We will serve refreshments after the talk!

In case of inclement weather, the club follows the Prince Georges County School System schedule.

Also, mark your calendar for the annual plant sales on April 21 and May 12 in the parking lot of High Point High School, 3601 Powder Mill Rd., Beltsville, MD. The sale starts at 8:00 am. To learn more about the Beltsville Garden Club, visit www.beltsvillegardenclub.org or Like Us on Facebook, www.facebook.com/beltsvillegardenclub.



Behnke Nurseries

Known for Quality Plants Since 1930

Frosty February!

Get your "beans in a row" and select your favorite seeds for vegetables, flowers & herbs while there are lots to choose from! And keep your feathered friends happy with bird seed and suet cakes galore. Need a new feeder? We've got plenty.

Free Classes in February

more info & sign up at www.behnkes.com under "Events"

- Planning for Planting Vegetables: A Year's Worth of Gardening Ideas (Feb. 3)
- Attracting Hummingbirds & Goldfinches (Feb. 24)
- Starting Flowers & Vegetables From Seed (Feb. 25)

Garden Hand-Tool* Sharpening

February 17 & 18, 1:00-3:00; February 24 & 25, 1:00-3:00
Bring in up to 2 tools during specified hours
Cost: \$3 each or 2 tools for \$5 (CASH only)
Proceeds will benefit a local foodbank
First come, first served.

*Sorry, we cannot sharpen lawn mower blades or saws.

Orchid Diagnostic & Repotting Clinic

w/ Carol Allen

February 4, 11 & 18, 9:30 to 4:30

Carol's advice is always FREE. Bring in the plant(s) you are concerned about. She will tell you how to resolve problems, and, for a fee, she will expertly repot them, showing you how.

Bonsai Hands-On Class w/ Jennifer Park

Saturday, February 3, 2:00 to 4:00 pm
registration required - www.shop.behnkes.com
Fee: \$65 - all materials provided

With a focus on care and maintenance, learn all the basics of bonsai design. Select a tree, learn how to transplant, and discover what the art of bonsai is all about as you create your very own bonsai to take home. This is a fully inclusive class.

National Capital Orchid Society (NCOS)

Orchid Auction

**Sunday, February 11, 2018
at Behnke Nurseries**

10-11am bidder's preview;
11am-3pm Auction
Free admission - open to the public.
more info at www.ncos.us



(301) 937-1100
11300 Baltimore Ave., Beltsville, MD
www.behnkes.com • behnkes@behnkes.net



HAIRSYLIST BONNIE KNOX

Former stylist of Beltsville
**Looking to connect
with my clients.**

Please text or call
410-703-4946
to set up an appointment

Wood's Flowers and Gifts

Fresh Flowers
Beautiful Roses • Cards
Plants • Dish Gardens
Orchid Plants • Silk Flowers
Stuffed Animals • Balloons

*Order Early for
Valentine's Day*

Daily deliveries locally and
across the country. Bring in
this ad for \$5.00 off any order
of \$30.00 or more.

Wood's Flowers and Gifts

Family-owned and operated since 1938

9223 Baltimore Ave. College Park, MD 20740

301-474-7000 | woodsflowersandgifts@gmail.com

Need Repair Work?

1-301-277-7200

Senior
Discounts

Free Roof Inspection*

(*call for terms)

CHAMPION

HOME IMPROVEMENTS, LLC

ROOFS • DECKS • GUTTERS • SIDING • WINDOWS
ROOF INSPECTIONS WITH GUTTER CLEANING

Low Monthly Payments

FREE Estimates*



Senior and Military Discount

BONDED • INSURED MHIC # 44848

www.championwindowsinc.com

CHAMPION



THE CRESCENT NURSERY

AND

SUMMER PROGRAM

Est. 1959

11723 Chilcoate Lane, Beltsville, MD

(301) 937-3133

CHILDREN 2-6 YEARS

and

BEFORE/AFTER SCHOOL PROGRAM

Qualified staff. A caring environment. Specially
planned programs. Snacks provided.

Open all year. All day.

Tech Sense By John Bell

New Year Potpourri

This month we will cover several topics. First, it is time to change all of your passwords again. Remember to use a different password for each website and make sure your passwords are at least 12 characters long with a mix of numbers, upper- and lower-case letters, and symbols. My recommended technique can be used to generate secure passwords for most websites. This technique requires us to create rules for creating passwords. Your rules should be different from the ones shown in the example here:

- Step 1: Select a phrase you will remember that is seven words or longer—the phrase I will use is: “endowed by their Creator with certain unalienable rights.”
- Step 2: Create a rule to pick letters from this phrase—Rule: Pick the third letter of each word longer than two letters. This gives us “deetrag.”
- Step 3: Create a rule to upper case letters—Rule: Uppercase every vowel, as in “dEEtrAg.”
- Step 4: Pick a number at least two digits long that changes each year—Rule: Years since John Glenn’s first orbital flight: 2018-1962 = 56
- Step 5: Rule: If special characters are allowed then use the digits selected above “5 and 6”: %^
- Step 6: Rule: use the first 3 and the last character of the website name—amazon.com then use “aman”
- Step 7: Combine these to make your new secure password: dEEtrAg56%^AmAn

Of course, you can mix and match rules as you please to make sure your passwords are unique. At first, it may be hard to remember the password, but you can write down the rules you are using and recreate the password for any site. I also suggest using a different phrase for more sensitive sites like banking and financial institutions.

Windows Fall Creators Update

Microsoft is now pushing the Windows 10 Fall Creators Update to everyone. This update, also known as 1709, may take hours to install. It is best for you to leave your computers on at night until the update has been installed. Not all Windows computers will be receiving this update because certain computers with the Atom CPU’s are now considered too slow to support the new version of Windows. These computers will continue to be supported running the previous version of Windows 10 until 2021.



Spectre and Meltdown

In the last couple weeks, the news has been talking about two CPU vulnerabilities, Spectre and Meltdown. These vulnerabilities are caused by issues with the design of the hardware that runs your computer. It does not matter if the computer is a Windows computer, Linux, or a Mac. The problem allows information that is in memory to be read by malware programs. This might include passwords and security keys. None of these malicious programs have been observed in the wild at this time, and Intel and Microsoft are already starting to push fixes out to machines. Some of these fixes may cause your computer to run a little bit slower. It seems that computers using AMD processors are not affected. While these are potentially serious flaws, there is no reason the average computer users to be seriously concerned at this time. The most vulnerable users are the large cloud-based servers running virtual machines.

Free Software

As many of you know, I am a big fan of free and open-source software (FOSS). Because I have configured several computers around the house this week, I thought I would share my list of always-added desktop software.

LibreOffice

First is the office suite LibreOffice (<https://www.libreoffice.org>). LibreOffice split from OpenOffice when Oracle purchased Sun Microsystems. Since then, LibreOffice has significantly improved the code and added features. The suite is mostly compatible with Microsoft Office with the ability to read and write MS-Office files. It includes a word processor, spreadsheet, database, drawing package, presentation software, and an equation editor. The current version is 5.4.4.

Inkscape

Inkscape is a vector drawing program that gives the ability to

create Scalable Vector Graphics (SVG) images. The current version is 0.92.2 and can be found at <https://inkscape.org>. Think of this as a free alternative to Adobe Illustrator or CorelDraw.

GIMP

GIMP is the Gnu Image Manipulation Program. It is free software that can be used like Adobe Photoshop to create pixel-based images or edit photographs. It supports a large number of special effects allows the use of scripting to create your own effects. The current version is 2.8.22 and can be found at <https://www.gimp.org>.

7-Zip

Windows has been able to create and extract zip files natively for many years now. Still, many people use WinZip to do this. A FOSS option is 7-Zip. What 7-Zip does that Windows does not do is allow you to encrypt the contents of the file archive. This is how I securely send files through email. I create and archive using 7-Zip and tell 7-Zip to encrypt it giving it a password. I then send the file and call the recipient to tell them the password. The current version of 7-Zip is 16.04 and can be found at <http://www.7-zip.org>.

VLC Media Player

VLC is a free and open-source media player. VLC allows the computer to play streaming video from CD, DVD, media files on your PC, and media sources on the web. It will also convert one media file format into another (called transcoding). Microsoft dropped a lot of its media playing capability when it released Windows 10. VLC brings it all back. The current version of VLC is 2.28 and can be found at <https://www.videolan.org/vlc/index.html>.

There is a lot of open-source software out there. These are just the ones that I install on every Windows machine. These applications are also available to run on Linux, and most work on the Raspberry Pi as well.

"My father needed to sell his home, and he needed the most proceeds to walk away with from the sale. We had interviewed over several real estate agents, but I did not feel or see the value and most of all, they were not there for him. Then finally, we met Cindy..."



*Cindy was the one to deliver and it was more than what we expected. I just wanted to let everyone know how grateful I am.
- Thank you so much, God Bless"*



Over 20 years experience

TRISTAR  **REALTY, INC.**

Cindy B. Sinanan

Real Estate Broker

240-372-7935

www.MyTristar.com

Everything We Touch Turns SOLD!™

- **Short Sale or Modification**
- **Rental Properties**
- **You want it SOLD!**

ROLEN
HEATING AND AIR CONDITIONING
LICENSED • BONDED • INSURED



SERVING: CALVERTON, MONTGOMERY & PRINCE GEORGE'S COUNTIES
"DAY & NIGHT EMERGENCY SERVICES"

Rosapepe's Report to Beltsville

Join Us in Annapolis on March 5

Delegates Barbara Frush, Josefine Peña-Melnyk, Ben Barnes, and I work hard to keep in touch with Beltsville residents and help you understand what Maryland's state government is doing and how it can help you and your family. We attend the Beltsville Civic Association and other community meetings, visit local churches and schools, and host "mobile office hours" at local grocery stores. Now we would like you to visit us in Annapolis at our annual reception for 21st District residents.

It is Monday evening, March 5 from 6-8 pm in rooms 170 & 180 of the Lowe House Building near the State House. We will have food, fellowship, and information on legislative issues of concern to our communities.

RSVP online at www.21stdistrictdelegation.com or call 301.858.3141 for details, questions, and information on parking. We will also have buses going from College Park and Laurel—contact our office, we will give you the information on this—and ride, don't drive! Share this invitation with friends and neighbors. We look forward to seeing you!

New Law Guarantees Sick Pay for Maryland Workers

Last year, the legislature voted to require employers with 15 or more employees to pay for at least five days of paid sick leave per year to their employees. It allows



Senator Jim Rosapepe

people who work 12 or more hours a week on a regular basis to earn paid sick days. The bill was vetoed by the governor, but we overrode the veto last month. The new law provides earned paid sick days to 488,000 Marylanders because their employers have 15 or more employees who currently face impossible choices between things like putting food on the table and staying home to care for a sick child. It provides job protection to another 205,000 Marylanders because they work for businesses with fewer than 15 employees who currently live in fear that they could lose their job if they get sick. They cannot be fired or have negative repercussions for taking unpaid sick or safe leave as allowed under the law if they have earned the time.

We expect the new law to go into effect later this year; the date was not clear when this issue of

The Beltsville News went to press. In addition to helping Maryland workers, we also sought to make sure that it would not hurt small businesses. For FAQ, please visit www.SenatorJimRosapepe.com

Scholarships to College

Each senator and delegate is allocated funds for scholarships to students in our district who attend Maryland colleges, and there are so many deserving students in Beltsville. With college tuition a struggle for many families, we need to do everything we can to help hardworking students get a good education. We cannot help everyone with Senatorial Scholarships, but we can certainly help some.

To apply online for a 2018-2019 Senate Scholarship, students should visit www.21stdistrictdelegation.com/college-scholarships. The deadline to apply is Friday, July 13. A separate Delegate Scholarship application from Delegates Barbara Frush, Josefine Peña-Melnyk, and Ben Barnes is on the same website page with an April 2 due date.

Information on other financial aid for Maryland college students can be found at www.mhec.state.md.us.

Contact Us

Please let us know if there are other issues you have questions or thoughts about. Moreover, of course, feel free to be in touch if we can help you. Just email 21stDistrictDelegation@gmail.com or call 301.858.3141.

Would you be smiling if this happened to your eyeglass frame?

Yes, if you wear frames made from Flexon.

Hours: Tues. & Wed. - 9am - 7pm
Thurs. & Fri. - 9am - 6pm
Sat. - 10am - 2pm
Sun. & Mon. - CLOSED

FLEXON
BY MARCHON

Brewer & Marshall, Inc. Opticians

10490 Baltimore Ave. • Beltsville, MD 20705

301-937-3677

Audiology Unlimited and College Park Hearing Services

Audiologist: Your Best Hearing Aid

AUDIOLOGY UNLIMITED

1400 Forest Glen Rd, #315
Silver Spring, MD 20910
301-754-0085

Or

15209 Marlboro Pike, #208
Upper Marlboro, MD 20772
301-780-6770

COLLEGE PARK HEARING SERVICES

7305 Baltimore Ave #202
College Park, MD 20740
301-277-2100

Dr. Kathy Mellott
Audiologist

AudiologyUnlimited@gmail.com
www.audiologyunlimited.net

Celebrating 40
years in
Audiology



**Audiologists
Do It Better.**

Beltsville VFD Ladies Auxiliary

The Ladies Auxiliary of the Beltsville Volunteer Fire Department would like to announce the installation of their Officers for the year 2018. Congratulations to President Peggy Zembower, Vice President Pam Casagran-

da, Recording Secretary Nancy Moore, Treasurer Angela Whitman, Corresponding Secretary Cathy Alexander, Chaplain Lois Hetz and Historian Bibi Gurwah.

A celebration dinner was held at The Greene Turtle in Burtonsville, on December 14, 2017,

with the members, their families, and friends in attendance. Everyone had a wonderful time. Many thanks to The Greene Turtle and their staff for having us. We look forward to another wonderful year.



The 2018 Ladies Auxiliary of the Beltsville Volunteer Fire Department

FREE Delivery
*Certain Restrictions Apply See store for details

Beltsville PHARMACY

We're YOUR community pharmacy. Come on in and meet Rakhi YOUR neighborhood Pharmacist.

- Fast, Friendly Service
- Free RX Deliveries
- Personal Support
- RX Price Matching
- Lg. Selection of Quality Goods & Products

\$20 Flu Vaccine

301-595-5939

www.beltsvillepharmacy.com

10820F Rhode Island Ave. • Beltsville

Across from the Post Office

SAVE!
We are less expensive than all the chain pharmacies!!!

Share Your News!

Send your article submissions to News Director Rick Bergmann at editorbvnews@gmail.com

**Orndorff
& Spaid
Inc.**

ROOFING Over 60 Years!



MAKE ROOFING the career for you...

JOIN OUR TEAM of experts who are respected as one of the top commercial roofing contractors for the last 60 years.

- ✓ **Want to learn a skilled Profession?**
Become a skilled roofing applicator in the field of built-up, single ply or sheet metal.
- ✓ **Prefer working outdoors?**
Avoid the hassles of a cramped office and having to wear a suit and tie.
- ✓ **Looking for a career that offers both challenge and variety?**
Work all over the metropolitan area on many different types of office buildings, schools & shopping centers.
- ✓ **Like to take pride in your work?**
Nothing beats driving by a local landmark knowing that you worked on that job
- ✓ **Excellent benefits.**
Health insurance
Life insurance
Long/short term disability
Retirement Plan
Vacation Package
- ✓ **One of the nation's top installers of commercial roofing & sheet metal.**
We are proud of our quality work throughout the metropolitan area. We have worked on some of the area's most prestigious projects.
- ✓ **Family Owned Business.**
Were in our second generation and have the philosophy that our business will continue for many more generations to come.

✓ **Stop by or call us when you're ready to start your career.**

301-937-5911

**Roofing and Sheet Metal Co.
11722 Old Baltimore Pike,
Beltsville, MD 20705**

www.osroofing.com

THE METRO AREA'S TOP RATED TREE SERVICE



Adirondack Tree Experts

- Removal · Pruning · Thinning
- Stump Removal
 - 24-Hour Emergency Service
 - Crane Service
 - ISA Certified Arborist

FREE ESTIMATES

301-595-2827

www.AdirondackTreeExperts.com



I.S.A Certified Arborist / MD Licensed Tree Experts / EHAP Certified Arborist
ISA Qualified Tree Risk Assessors / Full Liability and Workman's Comp Insurance



School News

St. Joseph's Announces Participation in National School Choice Week, January 21-27, 2018

St. Joseph's Regional Catholic School announced today that it would celebrate the school's students, teachers, and staff during National School Choice Week 2018, which will be held from January 21-27, 2018. St. Joseph's is a Catholic school serving grades Pre-K-8 with a student enrollment of 192.

Started in 2011, National School Choice Week (NSCW) is the world's largest annual education-related celebration. The goal of NSCW, which features participation from tens of thousands of schools and organizations, is to shine a positive spotlight on effective education options for children.

During National School Choice Week, schools across America celebrate the challenging, motivating, and effective education they provide to students. At the same time, parents use the week to learn more about the education options available to their children in advance of the upcoming school year.

"We are grateful to have St.

Joseph's participate in National School Choice Week 2018," said Andrew Campanella, NSCW president. "I salute the students, teachers, staff, and families of ST. JOSEPH'S for their commitment to raising awareness about educational opportunity. Today's students are tomorrow's leaders, and it is up to everyone to ensure that we prepare children for successful, happy, and productive lives. ST. JOSEPH'S is working to do that."

National School Choice Week is nonpartisan and nonpolitical and is not related to any legislative advocacy effort.

For more information about St. Joseph's Regional Catholic School, visit www.stjosrcs.org.

For more information about National School Choice Week, visit on the web www.schoolchoiceweek.com, via Twitter (www.twitter.com/schoolchoicewk), on Facebook (www.facebook.com/schoolchoiceweek), or on Instagram (www.instagram.com/schoolchoiceweek).



Lighthouse Ministries International Celebrates 10 Years "2008-2018"

Join Us At The City

❖ Bus Trip to Sight & Sound – March 17 (*call for ticket info.*)

❖ 1st Decade Holy Convocation

❖ March 20 -23, 7PM Nightly with Special Guests

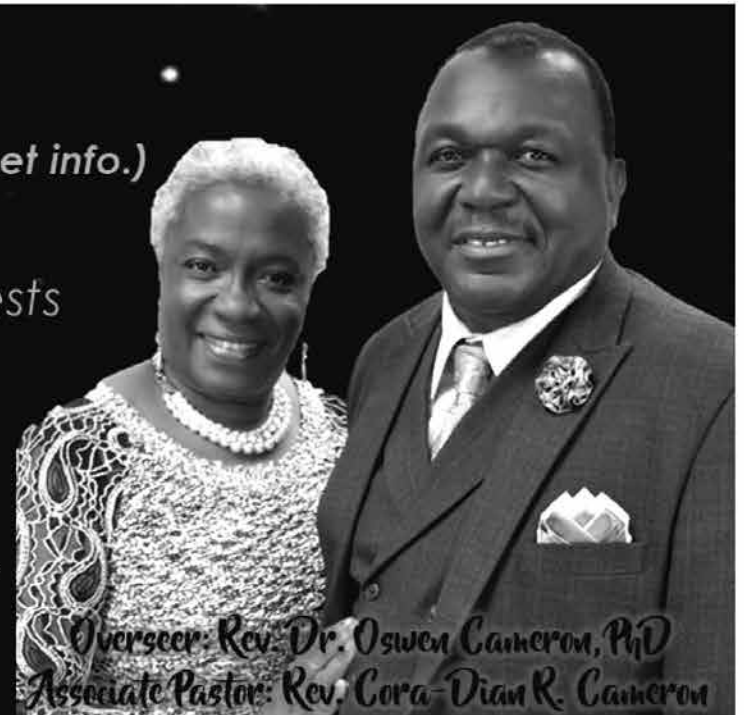


Chaplain Barry Black Rev. Ruth P. Lee Rev. Colin Esseboom Rev. John Goddard Rev. Levi Ingibe Rev. Alex Graham

❖ 10th Anniversary Celebration Service

Sunday • March 25 • doors open at 2PM

10727 Tucker Street, Beltsville Maryland 20705 | anniversary@lhmiinc.org | 301-477-1074



Overseer: Rev. Dr. Oswen Cameron, PhD
Associate Pastor: Rev. Cora-Dian R. Cameron

Volunteer or Work At Lighthouse Ministries International, Incorporated

* Admin. Assistant - Part-Time, Degree not required, Experience in Church Admin. or equivalent, Rate Negotiable

* Accountant - Part-Time, Experience in Church Finance or equivalent Non-Profit Management, Rate Negotiable Degree preferred

Apply Today • Send resume to work@lhmiinc.org • To learn more about us visit us online www.LHMIinc.org

Lenten and Easter Activities at Emmanuel UMC

The most important season in the life of the church is Lent. This is the season that allows us to reflect on the final days of Jesus Christ and what they mean. Emmanuel UMC is holding many activities and special events for everyone in the Beltsville community. The first day of Lent is February 14, Ash Wednesday. Emmanuel will celebrate with a special Wednesday service at Queens Chapel UMC, 7410 Old Muirkirk Rd, Beltsville, MD 20705, at 7:30 pm.

On Saturday, February 10, there will be a pancake supper at

5 pm. Everyone is invited to this event. Tickets cost \$10 for adults, \$5 for children ages 3 through 10, and children 2 and under eat free. Tickets will be sold in the hallway on Sunday mornings and at the door on the day of the event. There will be fun and activities for the whole family!

On Saturday, March 24, there will be a community Easter egg hunt on the lawn with games, crafts, refreshments, and a visit from the Easter Bunny. The hunt is for children 2–12 years of age. It will begin at 10 am with games

and crafts for the children. The actual Easter egg hunt will happen from 11–12.

March 25 is Palm Sunday and the beginning of Holy Week. Emmanuel will be presenting its annual Easter cantata, a celebration of the Lenten season through a musical program performed by our music ministries. The cantata is an excellent worship experience that begins at 10 am. The entire community is invited to attend.

Thursday, March 29, is Maundy Thursday or Holy Thursday. Emmanuel will hold its tradi-

tional Holy Thursday service to remember the Last Supper. It is a very moving and informative service, which will be followed by the annual Seder meal tasting, a chance to experience the foods of the traditional Jewish Seder meal

as well as a time to meet the members and attendees of Emmanuel.

Good Friday, March 30, is the day on which the church remem-

EMMANUEL UMC
continues on page 14

Emmanuel UMC to Host Free Screening of *Hidden Figures*

In honor of African-American History Month, Emmanuel United Methodist Church, 11416 Cedar Lane, Beltsville, MD 20705, will be hosting a free screening of *Hidden Figures*, the 2016 film that chronicles a crew of African-American female mathematicians who served a vital role in NASA during the early years of the US space program. The screening will take place on Saturday, Feb. 17 at 4 pm. If there is snow, the screening will take place on Feb. 24. This screening is open to you and your family. There will be popcorn and light snacks served.

According to www.foxmovies.com, “Hidden Fig-

ures tells the incredible untold story of Katherine Jonson (Taraji P. Henson), Dorothy Vaughan (Octavia Spencer) and Mary Jackson (Janelle Monae) – brilliant African-American women working at NASA who served as the brains behind the launch into orbit of astronaut John Glenn, a stunning achievement that turned around the Space Race. The visionary trio crossed all gender and racial line and inspired generations.” It is rated PG for thematic elements and some language. You can view the trailer on Emmanuel’s website at www.eumcbeltsville.com.

Annual Pancake Supper at Emmanuel UMC

Emmanuel United Methodist Church, 11416 Cedar Lane, Beltsville, MD 20705, will be hosting its annual Pre-Shrove Pancake Supper on Saturday, February 10, at 5 pm. Pre-Shrove pancake suppers are a tradition that reaches back centuries. Typically, they are held on the Tuesday preceding Ash Wednesday, which is called Fat Tuesday. Emmanuel holds its on the Saturday preceding Ash Wednesday because the church

teaches ESOL on Tuesday evenings.

The dinner will include all-you-can-eat pancakes and sausage. There will also be gluten-free pancakes this year, a new addition to the menu. The pancake supper is an excellent family event that will have games for kids and activities for everyone. The cost is \$10 for adults; \$5 for children 4–12, and free for children 3 and under. You can find information at www.eumcbeltsville.com or call the church office at 301.937.7114. You may buy tickets on Sunday mornings between services, 10:15–11:00 am, as well as at the door on February 10.



“Make Deller Your Seller”
Bette Deller, CRS, GRI, SRES
Long & Foster Real Estate, Inc.
bette.deller@longandfoster.com
www.bettedeller.com
301-384-8700 (Office)
301-257-5852 (Cell)

Call Me



Silver Spring —\$185,000



Laurel/Seniors 55+ —\$283,000

This is not intended to solicit currently listed properties.

How About Downsizing to a Condo for Valentine’s Day?

You’d Love one of these!



IF IT'S
REAL ESTATE,
IT'S
ROBERTA!!

WILLIAMS
REAL ESTATE ASSOCIATES

ROBERTA
301-937-3124

Experienced, Reputable • Distinguished Sales Club
Full time professional • CRS, GRI, SFR • Associate Broker

E-mail: robertayaklich@gmail.com • 301-262-1700



SUPER BUY!

4 BDRM (2 huge ones) 2 BA, 2 fireplaces, separate dining room, unfinished basement, screened porch, nice fenced yard.

\$289,900



SPECTACULAR UPDATED RAMBLER!

1,704 Sq. Ft. on each level, 4 BDRM on main level, 3.5 BA, large 2 car garage with lift, new windows, remodeled kitchen and baths.

\$384,900



AREA EVENTS

Please contact the individual facilities regarding late changes or updates to hours of operations, especially during holidays or inclement weather.

MONTPELIER MANSION & ART CENTER

9650 Muirkirk Rd., Laurel, MD 20708. Phone: 301.377.7817. TTY: 301.699.2544. E-mail: montpeliermansion@pgparks.com. Self-guided tours of the mansion: Thur. – Tue. from 11 a.m. to 3 p.m. Cost: \$5/ adults, \$4/seniors, \$2/children ages 5 – 18, free/ages 4 and under. **The mansion is closed on Wednesdays and some holidays.** The grounds are open from dawn until dusk every day of the year and access is free of charge. Contact the Mansion for more information.

DISCOVERING THE MEN OF THE 25TH UNITED STATES COLORED TROOPS

The exhibit continues through Sun., Mar. 11. Open when the mansion is open. Free with regular admission.

COLLEGE PARK AVIATION MUSEUM

1985 Cpl. Frank Scott Dr., College Park, MD 20740. Phone: 301.864.6029. TTY: 301.699.2544. Regular hours of operation are 10 a.m. to 5 p.m. daily, except for most major holidays and some special events. Cost: \$5/adults, \$4/seniors, \$2/children, free/age 1 and under. See CollegeParkAviationMuseum.com for more information as well as events for February.

DISCOVERY CART LOGBOOKS: A KEY TO HISTORY

Fri., Feb. 9 from 11 a.m. to 2 p.m. Explore the history of African-American aviators through primary sources and documents. Learn about these courageous pilots and create your own pilot logbook. The Discovery Cart is for museum visitors of all ages. Cost: free with museum admission.

LAUREL–BELTSVILLE SENIOR ACTIVITY CENTER

Holiday closing: Mon., Feb. 19. Regular hours of operation: Mon. – Thur. from 8 a.m. to 9 p.m., Fri. from 8 a.m. to 5 p.m., Sat. from 8 a.m. to 2 p.m., closed Sunday. Address: 7120 Contee Rd., Laurel, MD 20707, around the corner from the Laurel Regional Hospital. Phone: 301.206.3350. Fax: 301.206.3387. TTY: 301.446.3402. Contact the center regarding classes and events for February. Membership is free for Beltsville residents who are age 60 or older.

SENIOR FRIENDSHIP CLUB

Friendship Club regular office hours are Mon. – Fri. from 10 a.m. to 12:30 p.m. Phone: 301.206.3380. The monthly meetings and luncheons take place on the second Wednesday of each month. The meeting for February is scheduled for Wed., Feb. 14 at 10:30 a.m. We will have a speaker for Black History month. Sign-up and pay for the luncheon by Wed., Feb. 7. For more details and events for 2018, call the office.

THURSDAY MOVIE MATINEES

The featured movie for Thur., Feb. 8 is *The Tourist* and Thur., Feb. 22 is *The Zookeepers Wife*. Start time is 10 a.m. and the end time is about 12 noon. Popcorn will be provided. Cost: free.

NATIONAL WILDLIFE VISITOR CENTER In the event of a Federal government shutdown, the visitor center and grounds will be closed until a new Federal budget is approved.

Holiday closure: Mon., Feb. 19. The center may also close early the last weekday before any holiday. Call the center for updates. Address: 10901 Scarlet Tanager Loop, Laurel, MD 20708. The entrance is accessed

FEBRUARY 2018

Calendar of Events

from Powder Mill Rd. between the Baltimore–Washington Pkwy. and Rt. 197. Main phone: 301.497.5772. For directions and more information, see <https://www.fws.gov/refuge/Patuxent/visit/directions.html>. Regular hours of operation for the Visitor Center are: Fri. – Wed. from 9 a.m. to 4:30 p.m., closed Thursdays. Regular hours of operation for the trails and grounds are: Open daily from sunrise to sunset, except for federal holidays. Cost: Free admission to the Visitor Center and its exhibits, grounds, and trails; other activities and events are free of charge if not noted. Space in public programs is limited. *Registration is by phone only and is required unless otherwise specified; call 301.497.5887.* Note: These public programs are designed for individuals/families. **Programs are subject to changes or cancellation due to weather or low participation.** Please advise us of any special needs so that we may accommodate you.

HOLLINGSWORTH ART GALLERY

The featured artists for February are Kaitlyn Baligush and Jan Michael Archer. The gallery is open when the Visitor Center is open. *Registration is not required.* All ages.

WILDLIFE IMAGES BOOKSTORE & BLUE GOOSE PASSPORT

The bookstore is open from 11 a.m. to 4 p.m. when the Visitor Center is open. Free stamps for the recently updated Blue Goose Passport for the National Wildlife Refuge System are available. Extra copies of the passports are for sale.

SCREECH & KESTREL

Saturdays, Feb. 3 and 17 from 1 p.m. to 2 p.m. each day. All ages. *No registration required.* Meet two of North America's smallest birds of prey: the American kestrel and eastern screech owl. Both are expert hunters. The American kestrel uses its acrobatic prowess, while the eastern screech owl is a stealthy silent hunter.

ONCE UPON A WINDY DAY

Sun., Feb. 4 from 10:30 a.m. to 11:30 a.m. Ages 5 – 7. Whoosh! Discover how the wind works and how it affects people and wildlife in this hands-on, interactive program with games and crafts.

FAMILY FUN: WHO WAS HERE?

Fri., Feb. 9 and Sat., Feb. 10 from 10 a.m. to 1 p.m. each day. All ages, no registration required. Winter is a great time to be a nature detective and look for animal tracks in the snow or mud. Even when we don't see the animals themselves, we can tell who has been there—and maybe what they were doing—by looking at their footprints and other things they leave behind. Come learn about tracks, scat, and other animal signs through hands-on activities and games for all ages. *This is a drop-in program: come when you wish, and leave when you're ready.*

WINTER ADAPTATIONS HIKE

Sat., Feb. 10 from 12:30 p.m. to 1:30 p.m. All ages. Come and enjoy a winter hike around Cash Lake. Learn about the adaptations that animals and plants use to survive this frosty time of year. Bring water and dress for the elements. The hike will start inside the visitor center.

CAMERA BASICS

Sat., Feb. 17 from 10 a.m. to 11:30 a.m. Ages 16+. The auto function on cameras is often helpful, but usually another set-

ting will get you the image you really want. This is a beginner workshop for those using DSLR cameras. *This class is limited to just five people.*

RAPTORS REIGN

Sat., Feb. 24 from 1 p.m. to 3 p.m. All ages, no registration required. Join special guest and licensed falconer Rodney Stotts as he shares the power of nature through discussions and up-close encounters with birds of prey. This is a drop-in program.

NATURE SONGS WITH STINA

Sat., Feb. 24 from 2:45 p.m. to 3:30 p.m. All ages, no registration required. *Parent participation required.* Join nature troubadour Stina for an afternoon indoor campfire sing along in our auditorium. Get your groove on with fun and silly nature songs!

TINY TOTS: NATURE AND MUSIC

Sun., Feb. 25 and Mon., Feb. 26 from 10:30 a.m. to 11:15 a.m. each day. Ages 16 – 48 mos.; *parental participation and registration required.* Learn about wildlife at the refuge through fun and interactive songs, stories, and activities.

NATURE TOTS: TWEET TWEET

Tue., Feb. 27 from 10:30 a.m. to 11:30 a.m. Ages 3 – 4. Introduce your preschooler to the world of birds through stories, songs, games, and crafts in this fun, interactive program.

BELTSVILLE EVENTS

Please contact the individual facilities regarding late changes or updates to hours of operations, especially during holidays or inclement weather.

NATIONAL AGRICULTURAL LIBRARY (NAL)

In the event of a Federal government shutdown, NAL will be closed until a new Federal budget is approved. Free and open to the public. Regular hours of operation are Mon. – Fri. from 8:30 a.m. to 4:30 p.m., except for federal holidays. The library is located at 10301 Baltimore Ave., near Sunnyside Ave. Parking is free. Main phone number: 301.504.5755. NAL is on Twitter at http://twitter.com/#!/National_Ag_Lib. See NAL.USDA.gov/visit-library for more information.

DIGITAL EXHIBITS

NAL offers online, digital exhibits that are free of charge. There are previews and links to more detailed information. See NAL.USDA.gov/exhibits.

VANSVILLE HEIGHTS CITIZENS ASSOCIATION

Mon., Feb. 12 at 7 p.m. Meetings are held at the Franklin Brown Recreation Community Center, 1733 Old Baltimore Pike, Beltsville, MD 20705 (located in the Vansville Park). The association meets on the second Monday of each month.

BEHNKE NURSERIES GARDEN CENTER

11300 Baltimore Ave. Please call 301.937.1100, ext. 0 or see Behnkes.com for more information and events for February.

PLANTING VEGETABLES: A YEAR'S WORTH OF GARDENING IDEAS

Sat., Feb. 3 at 11 a.m. Registration requested. Cost: free. Join Christopher Lewis, CPH and learn what vegetables to plant and when to plant them from spring through fall so you can make a plan for your garden.

NATIONAL CAPITAL ORCHID SOCIETY AUCTION

Sun., Feb. 11 from 10 a.m. to 3 p.m. Free admission and open to the public. This live auction will offer over 300 blooming or near-blooming size orchids—some very rare—from well-known growers coast to coast. This is one of the largest orchid auctions in the country. More info at www.ncos.us.

GARDEN TOOL SHARPENING

Two weekends: 1) Sat., Feb. 17 and Sun., Feb. 18, and 2) Sat., Feb. 24 and Sun., Feb. 25 from 1 p.m. to 3 p.m. each day. Bring up to TWO (2) garden hand tools per person and have them sharpened by Behnke's staff members. Cost: \$3 each or 2 tools for \$5, CASH ONLY. All proceeds will be donated to a local foodbank. First come, first served. *Sorry, we can't sharpen mower blades or saws.* Please exercise patience if there is a line. Tool sharpening takes time.

ATTRACTING HUMMINGBIRDS & GOLDFINCHES

Sat., Feb. 24 at 11 a.m. Registration requested. Cost: free. Learn how to entice these and other wonderful birds to your garden. Make plans now to attract these special beauties during their spring migration northward so that they stay with you all summer.

7TH ANNUAL PHILADELPHIA FLOWER SHOW TOUR

Thur., Mar. 8 from 10 a.m. to 10 p.m. This bus trip is by organized by Washington Gardener magazine and will be leaving from and returning to Behnke's. The Philadelphia Flower Show is the oldest and largest indoor flower show in the world. The theme for 2018 is *Wonders of Water*. See tropical jungles, temperate forests, native woodlands, and arid landscapes. A new attraction, *America's Backyard*, will offer smart ideas for outdoor living and conservation tips for the home garden. **Registration deadline is Thur., Mar. 1.** The cost is \$100/person or \$95/person for *Washington Gardener* subscribers and includes round-trip transportation, lunch, and admission. For more information, see www.Behnkes.com/files/2018/WGPhilly-FlowerShow-Behnke-2018.pdf or contact Kathy Jentz at kathyjentz@gmail.com.

BELTSVILLE LIBRARY

Holiday closure: The library will be closed Mon., Feb. 19. Address: 4319 Sellman Rd., Beltsville, next to the police station. Main phone number: 301.937.0294. Regular hours of operation are Mon. – Tue. from 1 p.m. to 9 p.m., Wed. – Fri. from 10 a.m. to 6 p.m., Sat. from 10 a.m. to 5 p.m., closed Sundays. Visit our library system website at www.pgcmis.info to check for weather-related closings and to use our online library services.

PROGRAMS FOR CHILDREN AND FAMILIES

CHESS CLUB

Tuesdays, 4:30 p.m. to 7 p.m. Drop in to learn to play or improve your game. All ages welcome: children, teens, and adults.

READY 2 READ PRESCHOOL STORYTIMES

Wednesdays at 10:30 a.m. Ages 3 – 5.

READY 2 READ TODDLER STORYTIMES

Wednesdays at 11:30 a.m. for ages 2 – 3 years old.

READY 2 READ BABY STORYTIMES

Thursdays at 10:30 a.m. and at 11:15 a.m. Ages birth – 2 years old.

KIDS ACHIEVE CLUB

Mondays from 5 p.m. to 7 p.m.; *closed Mon., Feb. 19.* Free homework help and reading practice for students in grades 1 to 6.

BLACK HISTORY LIVE WITH CULTURE QUEEN

Thur., Feb. 1 from 3:30 p.m. to 4:30 p.m. Music, movement and storytelling by award-winning dramatist Culture Queen. Children of all ages and adults.

ILEAD TUTORING AND MENTORING

Two Saturdays, Feb. 3 and 17, from 12 noon to 2 p.m. Tutoring and mentoring for students in grades 6 – 8. See www.ilead-success.org.

STEM-TASTIC BLACK INVENTORS

Wed., Feb. 7 from 4 p.m. to 5 p.m. Join us to learn about Benjamin Banneker and learn how an analog clock works! Limit 20. Please call 301-937-0294 to register.

AN AFTERNOON OF BALLET

Sat., Feb. 17 from 2 p.m. to 3 p.m. Join the Performing Arts Repertory Company for an afternoon of ballet! Original and classical pieces. Dancers of all ages for children and adults of all ages.

TAIL WAGGIN' TUTORS

Two sessions: 1) Sat., Feb. 17 from 2 p.m. to 3 p.m., and 2) Tue., Feb. 20 from 4 p.m. to 5 p.m. Children read to a dog and gain confidence reading. Ages 5 – 12. For information, call or visit the branch.

PROGRAM FOR ADULTS

ENGLISH CONVERSATION CLUB

English Conversation Club for adults takes place on Wednesdays from 10:15 a.m. to 11:30 a.m. Practice speaking English in a friendly environment.

BELTSVILLE COMMUNITY CENTER

Address: 3900 Sellman Rd., Beltsville. Phone: 301.937.6613. Spanish line: 301.445.4509. TTY: 301.445.4512. Regular hours of operation are: Mon. – Thur. from 9 a.m. to 9 p.m., Fri. from 9 a.m. to 7 p.m., Sat. from 9 a.m. to 4 p.m., closed on Sunday. Hours of operation for Xtreme Teens and Pre-teens: Fri. – Sat. from 7 p.m. to 10 p.m. Contact the center regarding events for February.

BELTSVILLE YOUNG AT HEART CLUB

Join us at the Beltsville Young at Heart Club on the 1st and 3rd Thursday of each month at 11:15 a.m. Members must be at least 55 years old. Visit us three times and become a member. We have speakers, entertainment, trips, 50/50, bingo, plus light refreshments. Questions: call Lois at 301.498.9736.

STRATEGY GAME CLUB

Mondays from 7 p.m. to 9 p.m. Enjoy board games, strategy games, and tons of fun. All skill levels welcome. Any game can be played as well as brought to the club to be played. Cost: free. All ages.

XTREME TEENS AND PRE-TEENS REGULAR EVENTS

Fridays from 7 p.m. to 10 p.m. Free with valid Center ID card. Ages 10 – 17.

VANSVILLE COMMUNITY CENTER

Address: 6813 Ammendale Rd., Vansville. Phone: 301.937.6621. Fax: 301.937.6623. Spanish line: 301.445.4509. TTY: 301.445.4512. Regular hours of operation:

CALENDAR
continues on page 14

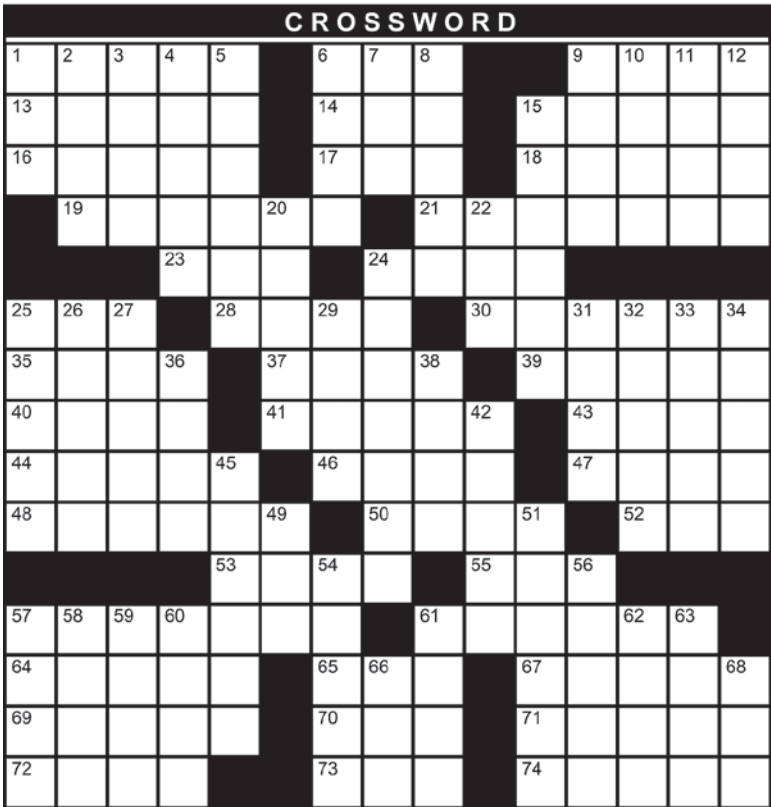
Statepoint
Crossword:
Winter Olympics

ACROSS

- 1. Nordic glühwein
- 6. *It last broadcast the Olympics in 1988
- 9. Sigma Phi Epsilon
- 13. Yodel's holler
- 14. Promise to pay
- 15. Pre-bun state
- 16. Dug up
- 17. Luftwaffe's WWII enemy
- 18. Provide with ability
- 19. *Country with most Winter Olympic gold medals
- 21. *Number of 2018 Winter Olympics sports
- 23. Dog command
- 24. Small island
- 25. Cul de ____
- 28. Partial haircut
- 30. Geek and jock, e.g.
- 35. S-shaped molding
- 37. International Civil Aviation Org.
- 39. Best not mentioned
- 40. Pakistani language
- 41. *American skating icon
- 43. College cadet program
- 44. Crocodile ones are insincere
- 46. Make children
- 47. This and the other
- 48. Praise for a fearless one
- 50. Dispatch
- 52. Ornamental pond-dweller
- 53. Classic sci-fi video game
- 55. Drag behind
- 57. *Done on 90m hill
- 61. "I love the smell of ____ in the morning."
- 64. UFO pilot?
- 65. 1973 Supreme Court decision name
- 67. "Complete ____'s Guides"
- 69. Short for incognito
- 70. Tokyo, in the olden days
- 71. Impulse transmitter
- 72. Indian restaurant staple
- 73. D.C. bigwig
- 74. Like a rookie

DOWN

- 1. *Olympic participant's hangout
- 2. Been in bed
- 3. *8-time American speed skating medalist
- 4. Regular visitors
- 5. Long-billed shore bird
- 6. Well-ventilated
- 7. Flapper's neckwear
- 8. Spots for links
- 9. Arial, e.g.
- 10. Ill-mannered
- 11. Malaria symptom



DISH DEALS!!

190 Channels
Now only ...
\$49.99/mo.
for 24 months

ADD
HIGH-SPEED
INTERNET
\$14.95/mo.
where available

CALL TODAY
PROMO CODE: **FreeEchoDot**
1-888-416-7103
Requires credit qualification and commitment

Switch to DISH and
Get a FREE Echo Dot
Control your TV hands-free with DASH
Hopper + Amazon Alexa
LIMITED TIME! Mention offer code FreeEchoDot
Requires internet connected Hopper or Hopper 3 and Echo Dot or Amazon Fire device.

© StatePoint Media

- 12. Subsequently
- 15. *"Agony of ____"
- 20. Like anchor aweigh
- 22. Not well
- 24. Ezra Pounds' poetry movement
- 25. *Which Korea is 2018 Winter host?
- 26. Come to terms
- 27. Closet wood
- 29. Frosts a cake
- 31. Fence prickle
- 32. Kindle content
- 33. Powerball, e.g.
- 34. *2014 Winter host city
- 36. France's currency
- 38. Shrek
- 42. Busybody, in yiddish
- 45. House cover
- 49. Opposite of pro
- 51. *Olympic no-no
- 54. Shrek and Fiona
- 56. Crane or heron
- 57. Jainism follower
- 58. Arm part
- 59. Isinglass
- 60. Lowly laborer
- 61. Rhymes with #60 Down
- 62. Plural of lira
- 63. Change of address
- 66. Lyric poem
- 68. X

Beltsville News
CHURCH DIRECTORY



St. Joseph Catholic Church

11007 Montgomery Road
Beltsville, MD 20705
301-937-7183
www.stjos.org

Pastor: Msgr. Karl Chimiak
Mass: Sat. 5 pm;
Sun. 8 am, 10 am, 12 noon

St. Joseph's Regional Catholic School

Principal: Dr. Janine Bertolotti
301-937-7154

Abiding Presence Lutheran Church

10774 Rhode Island Avenue
301-937-7646



Sunday Worship: 9:30 a.m.
Rev. Jongkil Na

www.APLChurch.org

Come and Join Us

Located in the Beltsville Professional Center

QUEEN'S CHAPEL UNITED METHODIST CHURCH

7410 Old Muirkirk Road, Beltsville, MD 20705

The Reverend William E. Butler, Senior Pastor



YOU ARE INVITED TO WORSHIP WITH US ON
SUNDAYS AND DURING THE WEEK

Sunday Worship Celebration begins at 10:00 a.m.

Communion Service every first Sunday 10:00 a.m. Worship

Church School for all ages 8:45 a.m.; Men's Bible Class 8:45 a.m.

Weekly Prayer Service Wednesdays 6:30 p.m.

Bible Study Wednesdays 10:30 a.m. & 7:00 p.m.

"Off the Hook" Young Adult Bible Study, Tuesdays 7:30 – 9:00 p.m.

Ash Wednesday Service, February 14, at 7:30 p.m.

Rooms available for banquets, workshops, & conferences, long or short term rentals

Church Administrative Office – (301) 210-9038

Web Site: www.queenschapelumc.org E-mail: secretary@queenschapelumc.com

Check us out on Facebook & Twitter



Share Your News!

Send your article submissions to News Director
Rick Bergmann at editorbvnews@gmail.com

Beltsville News CHURCH DIRECTORY



A Mission Parish of the
Russian Orthodox Church Outside Russia

Located in Twin Chimneys Office Park
10760 Baltimore Ave, Beltsville, MD

Evening Vigil: Sat. 5:00 PM
Hours & Divine Liturgy: Sun. 9:40 AM

All Services in English

Fr. George Johnson, Rector
301-572-5738
www.holyapostlesorthodoxchurch.org

**Holy Apostles
Orthodox Church**
Come and see.

St. John's Episcopal/Anglican Church

at the corner of Route 1 & Powder Mill Road in Beltsville
(301) 937-4292

The Reverend Joseph M. Constant, Rector



Sunday Worship Schedule

Quiet service: 8:00 a.m.
Family-oriented service: 10:00 a.m.

Sunday School: 9:45 a.m.
Between September and June

Sunday Nursery - during our 10 a.m. service
Wednesday Evenings Bible Study 6-9 p.m.

*We are a beacon of Christ's love
offering hospitality and sustenance
to all on their spiritual way.*

www.saintjohnsbeltsville.org



Cross Creek Apostolic Church

12511 Old Gunpowder Rd Spur
Beltsville, MD 20705
Phone: 301-498-6006 - Website: www.aupc.org

Sunday Service	Thursday Service
Adult Sunday School 9 am	Adult Bible Study 7 pm
Praise & Worship 10 am	Youth Ministry 7 pm
Children's Ministry 10 am	Kids' Power Hour 7 pm
	Discipleship Class 7 pm
	Search for Truth 7 pm


First Baptist Church of Beltsville (SBC)

4700 Odell Road Beltsville, MD 20705
301-937-7771 • www.fbcbeltsville.org
Keith Holland, Pastor

Abundant Grace; Abundant Life; Abundant God!

Sundays:	
*Sunday School for all ages	9:45 a.m.
*Morning Worship	11:00 a.m.
Evening Worship Activities	6:00 p.m.
Adult Choir Practice	7:00 p.m.

Wednesdays:	
Adult Bible Study & Prayer	7:00 p.m.
RA's, GA's, Mission Friends	7:00 p.m.
Youth Fellowship	7:00 p.m.



Emmanuel UMC

Beltsville, Maryland

A Vibrant Multicultural Church Sharing the Light of
Christ with all People

Pastor Jacob Young, PhD
11416 Cedar Lane Beltsville, MD 20705
301.937.7114 • office@eumcbeltsville.com
www.eumcbeltsville.com
www.facebook.com/groups/EUMCBeltsville/

Sunday Services:

9:00 am Contemporary Service
11:15 Traditional Service
10:15 am Bible Study & Sunday School for adults & children
Nursery Care is available for both services
Sign Language Interpretation at 11:15 service

Upcoming Events in February:

February 10 at 5 pm: Community Pancake Supper

February 14 at 7:30 Ash Wednesday Service at
Queens Chapel UMC

February 17 *at 4pm: Free Screening of
Hidden Figures

*Snow date Feb. 24

Sunday February 25 at 9:00 am and 11:15 am
African American History Sunday

CHAD

continued from page 1

the finished products. Still, others brought soaps and additional supplies.

Deanie said, "The people of the church swarmed to help out with this project. It was much work to sew the kits in ways that make them last. I am grateful for the help of Days for Girls International. They have tested these kits in multiple places and gave us detailed instructions."

However, she added, "It was the Beltsville church people who made the kits. They are amazing."

Dr. Danae Netteburg, an OB/GYN physician in Bere, will distribute the kits—and teach the girls how to use them. The kit design makes it easy to wash and reuse. Dr. Netteburg focuses her practice on women's health issues. The kits will not only help girls stay in school but also assist them with hygiene issues and enhance their health.

The Beltsville church has been part of the community for more than 60 years. It has three worship services on Saturday mornings at an Ammendale Road campus and at a Tech Road campus. The church also operates a community services center at the Ammendale campus that helps people with housing and food needs.

EMMANUEL UMC

continued from page 11

bers the death of Jesus. At 7 pm, there will be a Tenebrae or dark service. This service brings to life the final hours of Jesus's time here on earth. It is a soul-stirring service that you do not want to miss.

Finally, on Sunday, April 1, join Emmanuel as it celebrates the joy of the Resurrection! There will be two services: the 9 am contemporary and 11:15 traditional. Sunday school for the young ones and Bible study for the adults will take place from 10:15–11 am! Emmanuel hopes your family can join this joyous occasion.

Unless otherwise noted, all events will take place at Emmanuel United Methodist Church, 11416 Cedar Lane, Beltsville, MD 20705. You can find out more information by visiting the church website at www.eumcbeltsville.com or calling the church office at 301.937.7114.

CALENDAR

continued from page 12

Mon. – Thur. from 9 a.m. to 9 p.m., Fri. from 9 a.m. to 7 p.m. (except for Xtreme Teens), Sat. from 9 a.m. to 4 p.m., Sun. from 12 noon to 4 p.m. Hours of operation for Xtreme Teens: Fri. – Sat. from 7 p.m. to 10 p.m. Contact the center regarding events for February.

XTREME TEENS AND PRE-TEENS REGULAR EVENTS

Fridays from 7 p.m. to 10 p.m. Ages 10 – 17. Free with valid Center ID card.

Classifieds • Call 301-937-6796

SERVICES

RNG CLEANING SERVICE - Small family owned business catering to you and your household needs. Friendly, reliable and trustworthy. Reasonable rates and flexible hours. Licensed and insured. Free estimate with appointment. Call Delores at 301-442-5032 or 240-280-1451. 07/18

TAX RETURNS - For businesses/individuals. Payrolls. Gerald Neumaier CPA. 301-953-1341; 301-776-6545. gncpa@verizon.net. 01/19

HAULING AND JUNK REMOVAL. Complete Clean Out - Garages, Homes, Construction Debris, etc. Licensed, insured, free estimates. Mike Smith 301-346-0840. 07/18

TREE AND STUMP REMOVAL Pruning, land clearing, contact Bob Berra, 301-674-3770 or 301-384-4746. 12/22

NJ CLEAN: Janitorial, housecleaning, carpet and upholstery cleaning. Residential, commercial, churches. One time, weekly, monthly. Licensed and insured. Free estimates. Call Nancy 202-288-3578. 03/1

BELTSVILLE LAWNS - For all your lawn and landscaping needs. We are a full service, year around Beltsville business. We offer: topsoil trimming, gutter cleaning, yard cleanups, mowing, thatching, aeration, flowerbed edging and much more. Call Bill 301-455-4491. 01/18

I PAY CASH FOR OLD RECORDS

Albums and 45s from 50s, 60s, 70s
Highest Prices Paid

Call Tom at (410) 533-1057

LESTER E. GROSS
Beltsville, MD.

BELTSVILLE REFUSE SERVICE

By the Job or by the Month
Dependable Reliable

937-5932

Jordan Kitt's Music School

PIANO/KEYBOARD LESSONS

Free Trial Lesson

10762 Baltimore Avenue
Beltsville, MD 20705
(located in the Twin Chimneys Office Park)

301-595-2888 Ext. 1
Mblakely@jordankitts.com

FOR RENT

ONE BEDROOM in end unit townhome in Beltsville. \$650 per month all utilities included. Call 240-997-0265 02/18

UNFURNISHED ROOM with window in a complete unit in a quiet and safe neighborhood in Beltsville. Prefer a female non-

smoker with references and deposit. Rent is \$500. Call 202-431-9813.

FOR SALE

Fort Lincoln Garden of Reflections double vault for two burials. \$7,000. 301-931-8216

BURTONSVILLE FUEL CO., INC.
"Family Owned & Operated Since 1955"

HEATING OIL • DIESEL

Heating & Air Conditioning Oil Burner Service

"Be One of Our Warm Friends"

301-384-7575
www.burtonsvillfuel.com

Traditional Funerals Monuments Cremation Service

Donald V. Borgwardt
Funeral Home, P.A.
Family owned and operated

4400 Powder Mill Rd.
Beltsville, Md. 20705-2751 Pre-Need Counseling
(301) 937-1707 By Appointment
www.borgwardtfuneralhome.com

HALL RENTALS
(CATERING)

Luncheons—B'Day Parties—Anniversaries—Weddings

College Park American Legion—Post 217

9218 Baltimore Blvd. (301) 441-2783
College Park, MD 20740

Contact Gary Kingery

BALLROOM RENTAL—Seats up to 400
Banquet Room w/dance floor—Seats 80
*COVERED PICNIC PAVILLION *
-Barbeque House & Horseshoe Pits
in a private, secluded area
Weddings/Anniversaries * Birthday Parties
Corporate Parties/Picnics * Bar/Bat Mitzvahs
Quinceanera Celebrations

COLLEGE PARK MOOSE LODGE #453
3700 Metzert Road, College Park
Call 301-935-5525 ask for Jimmie

Reach your Beltsville neighbors with a low-cost classified ad in The Beltsville News. Call 301-937-6796

BELTSVILLE VOLUNTEER FIRE DEPARTMENT



4911 Prince George's Avenue
301-641-1092
HALL RENTAL



Experienced Catering by Ladies Auxiliary!
WEDDING RECEPTIONS, BANQUETS, BIRTHDAY PARTIES, BRIDAL SHOWERS OR ANY OTHER OCCASION

Let Our Family of Skilled Electricians Serve You
Joseph J. Panizari, Sr. • Joseph J. Panizari, Jr.
Richard A. Panizari • Dino S. Panizari

11222 Old Baltimore Pike
Beltsville, Maryland 20705
301-937-5051
Fax 301-937-5054

G.H.E. Electric Services, Inc.
Family Owned & Operated Since 1964
Residential & Commercial
Licensed & Insured

Everything electrical from basement to attic
Service Heavy Ups - Our Specialty
Replace Fuse Box with Circuit Breaker Box

MasterCard VISA

ED LUNDQUIST
HOME IMPROVEMENT & REPAIR SPECIALIST
(301) 775-9001

For all types of jobs around your home

Painting	Drywall	Gutters	Electrical	Flooring
Carpentry	Cement	Fences	Plumbing	Door Locks
Flooring	Ceramic Tile	Drain Cleaning	Power Washing	

NO JOB TOO SMALL

Beltsville Resident since 1985 Maryland Home Improvement License

Service & Repairs - All Makes & Models MD State Inspection

PRECISION CYCLE WORKS

Engine Building Harley-Davidson
Trans. Building Indian

Hours: Tues - Fri 12-6, Sat 10-3
10745 Tucker St., Unit 3, Beltsville, Maryland 20705
301.937.5783

CPR

CPR & First Aid Training
Wednesdays & Saturdays
(301) 595-8800
Register Online @ www.pleasedocpr.com

*Do You Know CPR?
Day & Evening Classes Available

Mitchell Home Contractors

Mike Mitchell, Owner
Windows • Doors • Siding
Carpentry
Handyman Services
30+ years experience

Cell: 301.758.3622 • Fax: 410-943-3838
Mitchellhomecontractors@yahoo.com • MHIC#97113



REFINANCE YOUR HIGH-INTEREST DEBT 2.99% APR FOR 6 MONTHS ON NEW CARDS!*

Make this the year for lowering your debt and attaining your financial goals. With our low-rate balance transfer credit cards, you can get all the power of Visa® and save money when you transfer your high-interest debt to our new *Elite Visa Rewards* or *Visa Platinum* credit cards.



Partnering for Financial Success

Transfer and Enjoy:

✓ **NO** Balance Transfer Fees

✓ Faster Debt Reduction

2.99% APR*

on all balance transfers for 6 months on new accounts!*

✓ **NO** Annual Fee

APPLY TODAY!

800.952.PGCU | 301.627.2666 | WWW.PRINCEGEORGESCFCU.ORG/VISA

Beltsville Branch
6985 Muirkirk Meadows Dr.
Beltsville, MD 20705

Bowie Branch
15201 Hall Rd.
Bowie, MD 20721

Largo Branch
9201 Basil Court
Largo, MD 20774

Upper Marlboro Branch
14741 Governor Oden Bowie Dr., RM-L210
Upper Marlboro, MD 20772

* APR= Annual Percentage Rate. Introductory Balance Transfer APR is 2.99% for 6 months from date of account opening; then the standard Balance Transfer APR applies. Standard Balance Transfer APR: 8.99% to 17.99%, based on your creditworthiness. The Promotional Rate is not available on Visa Secured credit cards. It does not apply to balances transferred from Prince George's Community Federal Credit Union loans. By signing this transfer request, I/we authorize Prince George's Community Federal Credit Union to verify the information on this request and to obtain credit information from a Credit Reporting Agency or others. It does not apply to balances transferred from Prince George's Community Federal Credit Union loans. You may transfer up to your available credit limit. Please continue to make minimum payments on your other credit card(s) until the balance has been transferred. The other institution(s) will refund all overpayments. Payment of the account(s) authorized by you may not satisfy any outstanding balance(s) on the designated account(s). Prince George's Community Federal Credit Union is not responsible for any outstanding balance(s) or additional charges in regard to such accounts, or for any changes resulting in any delay in the payment or transfer of balances. The total amount(s) transferred will be treated as a cash advance; finance charges will be applied from the day the balance(s) are transferred to your Prince George's Community Federal Credit Union credit card account. Prince George's Community Federal Credit Union reserves the right to refuse multiple transfers from the same credit card. Certain restrictions apply. For more information and conditions, please contact us.

